



Автомобильные реле серии FTR-P2

Технические характеристики

Архангельск (8182)63-90-72	Ижевск (3412)26-03-58	Магнитогорск (3519)55-03-13	Пермь (342)205-81-47	Сургут (3462)77-98-35
Астана (7172)727-132	Иркутск (395)279-98-46	Москва (495)268-04-70	Ростов-на-Дону (863)308-18-15	Тверь (4822)63-31-35
Астрахань (8512)99-46-04	Казань (843)206-01-48	Мурманск (8152)59-64-93	Рязань (4912)46-61-64	Томск (3822)98-41-53
Барнаул (3852)73-04-60	Калининград (4012)72-03-81	Набережные Челны (8552)20-53-41	Самара (846)206-03-16	Тула (4872)74-02-29
Белгород (4722)40-23-64	Калуга (4842)92-23-67	Нижний Новгород (831)429-08-12	Санкт-Петербург (812)309-46-40	Тюмень (3452)66-21-18
Брянск (4832)59-03-52	Кемерово (3842)65-04-62	Новокузнецк (3843)20-46-81	Саратов (845)249-38-78	Ульяновск (8422)24-23-59
Владивосток (423)249-28-31	Киров (8332)68-02-04	Новосибирск (383)227-86-73	Севастополь (8692)22-31-93	Уфа (347)229-48-12
Волгоград (844)278-03-48	Краснодар (861)203-40-90	Омск (3812)21-46-40	Симферополь (3652)67-13-56	Хабаровск (4212)92-98-04
Вологда (8172)26-41-59	Красноярск (391)204-63-61	Орел (4862)44-53-42	Смоленск (4812)29-41-54	Челябинск (351)202-03-61
Воронеж (473)204-51-73	Курск (4712)77-13-04	Оренбург (3532)37-68-04	Сочи (862)225-72-31	Череповец (8202)49-02-64
Екатеринбург (343)384-55-89	Липецк (4742)52-20-81	Пенза (8412)22-31-16	Ставрополь (8652)20-65-13	Ярославль (4852)69-52-93
Иваново (4932)77-34-06	Киргизия (996)312-96-26-47	Казахстан (772)734-952-31	Таджикистан (992)427-82-92-69	

Единый адрес для всех регионов: fst@nt-rt.ru || www.fujitsu.nt-rt.ru

SILENT TWIN RELAY FOR AUTOMOTIVE APPLICATIONS

1POLE X 2, H-BRIDGE, 25A

FTR-P2 SERIES

■ FEATURES

- Low operating sound
An original silent mechanism decreases the propagation of operating sound when mounted on a PCB. (Average sound pressure: 50dB at 5 cm).
- Compact, high density package
350 mm² mounting area. (11% less than the FBR 510 series non-quiet twin relay).
- High sensitivity, low power consumption
(nominal power consumption: 450 mW).
- High capacity
Heat dissipation is high due to a single cover structure.
- Ease of PCB layout
The FTR-P2 incorporates internal H-Bridge connections typically used in reversing applications. All terminals are on the perimeter.
- High breaking capability.
In addition to the standard gap product (0.3 mm), a higher gap product (0.6 mm), suitable for over voltage breaking can be supplied.
- Typical applications
Power window
Doorlock
Power seat
Wiper (for H-Bridge circuit)



■ ORDERING INFORMATION

[Example] FTR-P2 C N 012 W1 **
 (a) (b) (c) (d) (e) (f)

(a)	Series Name	FTR-P2	: FTR-P2 Series
(b)	Contact Arrangement	C	: 1 FormC x 2
(c)	Contact Gap	N	: 0.3 mm gap
(d)	Nominal Voltage	009 010 012	: 9 VDC : 10 VDC : 12 VDC
(e)	Contact Material	W1	: Silver-Tin-Oxide-Indium Oxide
(f)	Special product specification	Symbol to specify special specification product	

Note: The part number is stamped on the relay cover as in the following example:

(Example) Ordering part number: FTR-P2CN012W1
 Stamped part number: P2CN012W1

FTR-P2 SERIES

■ SPECIFICATIONS

Item		Specification	Remark	
Contact	Arrangement	1 FormC x 2 in H-Bridge		
	Material	Silver-Tin Oxide-Indium Oxide		
	Voltage drop	100 m maximum	Measured at 2A, 12 VDC	
	Contact rating	DC 14V, 25A (motor locked)		
	Maximum Carrying Current	25 A/ 1 hour (25 C, nominal voltage applied to coil)		
	Minimum Load*	6V 1A	Reference value	
Coil	Operating Temperature Range	-40° C to +85° C	No frost	
	Storage Temperature Range	-40° C to +100° C		
Time	Operate (at nominal voltage)	10 ms maximum	When nominal coil voltage is applied to coil, or removed, no diode.	
	Release (at nominal voltage)	5 ms maximum		
Life	Mechanical	10 million operations minimum		
	Electrical	100K operations minimum	At contact rating	
Other	Vibration resistance (Operational)		10-55Hz, 1.5mm double amplitude	= 9.13G @55Hz
	Shock resistance	Operational	100 m/s ² minimum (10G)	
		No Damage	1000 m/s ² minimum (100G)	
	Weight		Approximately 13 grams	
	Average sound pressure		Approximately 50 dB at 5 cm	A weighting

*This is the standard value of the minimum load level. This value may differ depending on the switching frequency, environmental conditions and target reliability standard. We recommend to check this value by an actual load prior to use.

■ COIL DATA

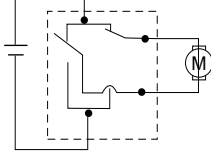
Product Name	Nominal Coil Voltage	Coil Resistance* (±10%)	Power Consumption at nominal coil voltage*	Must Operate Voltage*	Must Release Voltage
FTR-P2CN009W1	DC 9V	180Ω	450mW	5.5V (20°) 6.9 V (85°)	0.72
FTR-P2CN010W1	DC 10V	220Ω	455mW	6.3V (20°) 7.9 V (85°)	0.8
FTR-P2CN012W1	DC 12V	320Ω	450mW	7.3V (20°) 9.2V (85°)	0.96

CHARACTERISTIC DATA

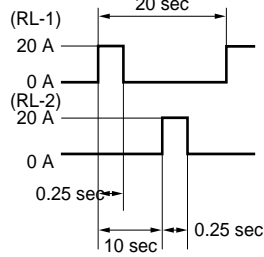
1. LIFE TEST (EXAMPLES)

- Test item
14 V DC-25 A
Motor Lock
100K operations
minimum

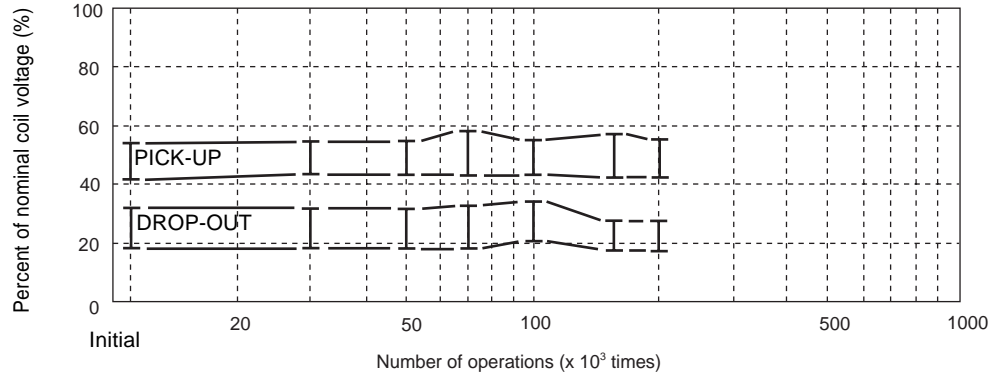
- Test circuit



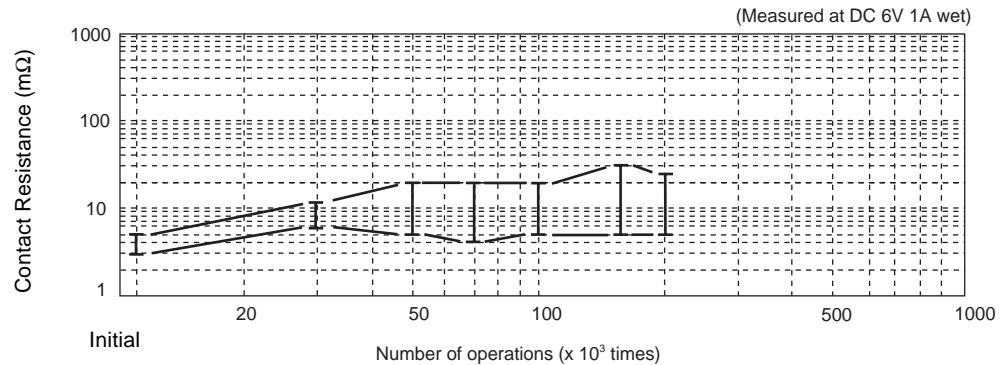
- Current wave form



- Shift of pick-up drop-out voltage

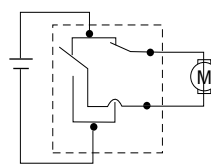


- Change in contact resistance



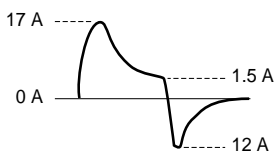
- Test item
14 V DC,
inrush current: 17A
motor free
300K operations minimum
0.25 seconds ON,
9.75 seconds OFF

- Test circuit

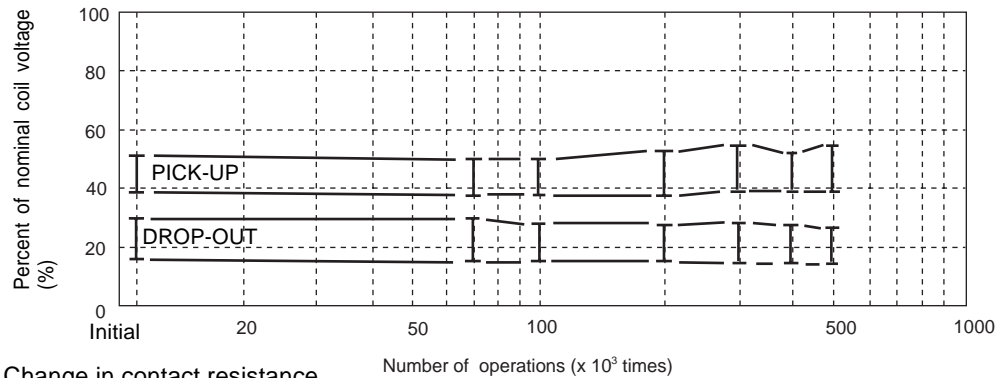


- Notes: 1. Test was done on one side of twin relay
2. NC contacts provide dynamic brake circuits

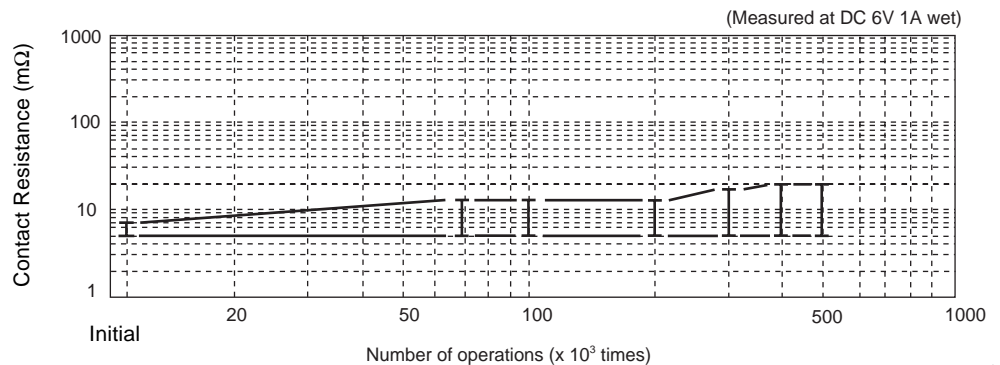
- Current wave form



- Change in pick-up drop-out voltage

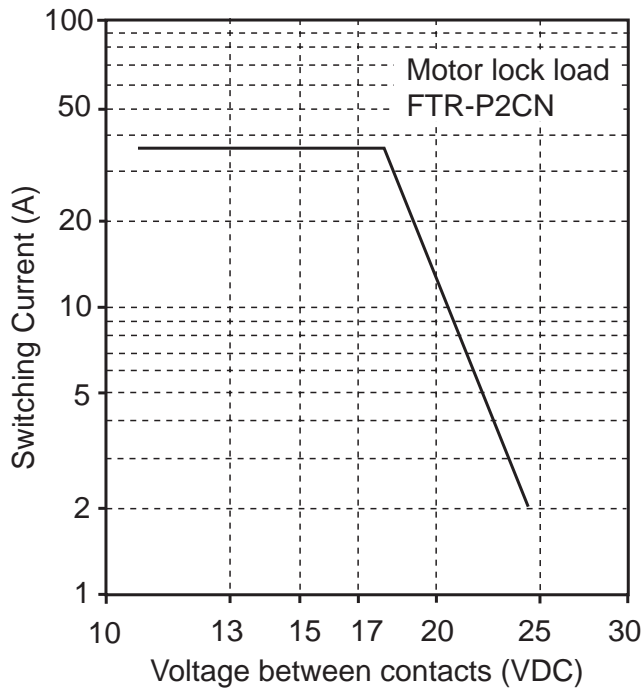


- Change in contact resistance

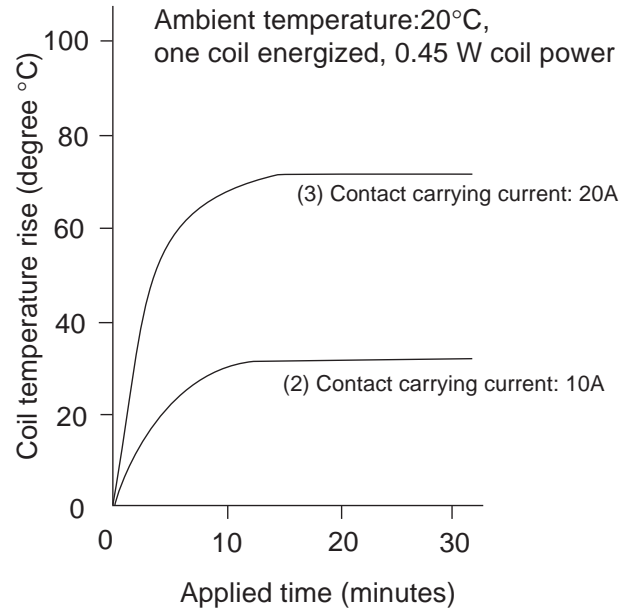


FTR-P2 SERIES

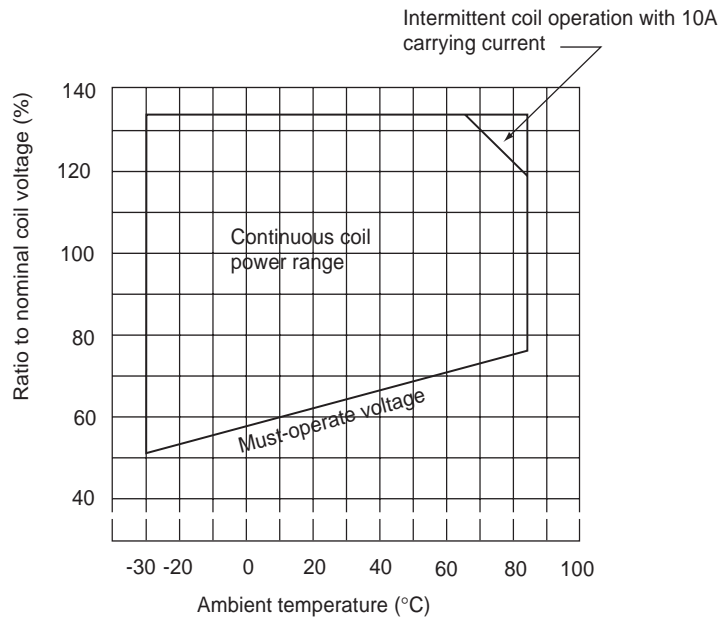
2. MAXIMUM BREAK CAPACITY



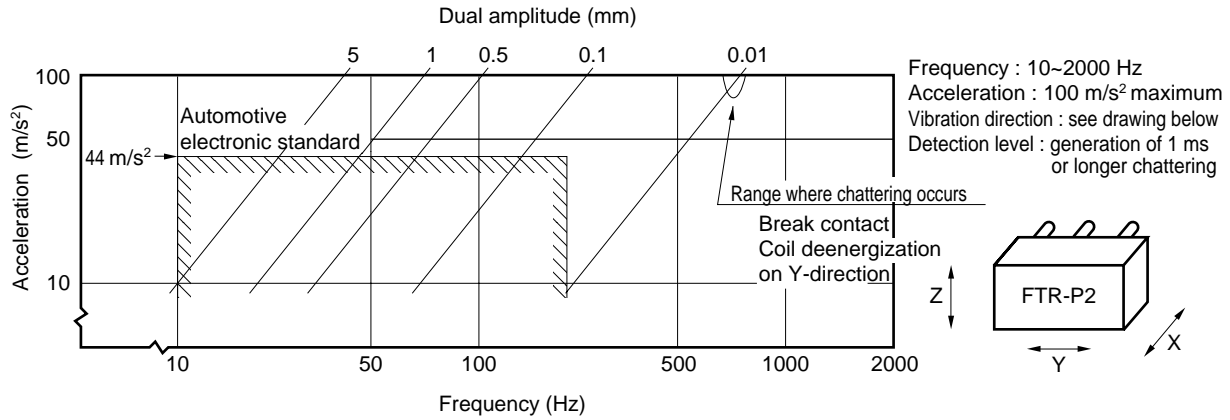
3. COIL TEMPERATURE RISE



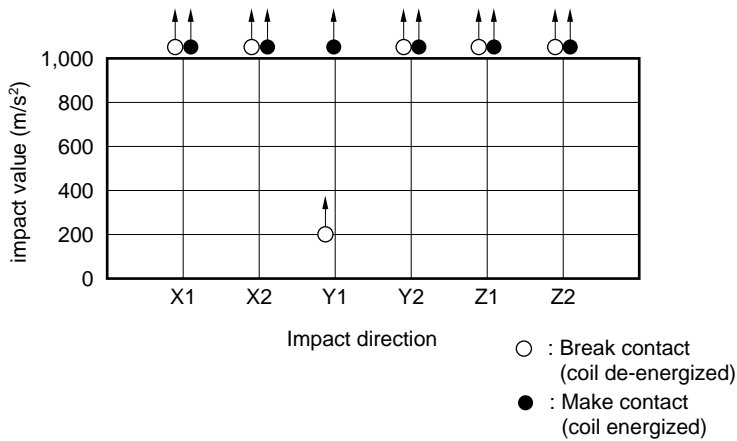
4. OPERATING COIL VOLTAGE RANGE



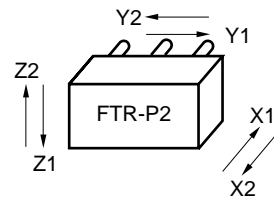
5. VIBRATION RESISTANCE CHARACTERISTICS



6. SHOCK RESISTANCE CHARACTERISTIC

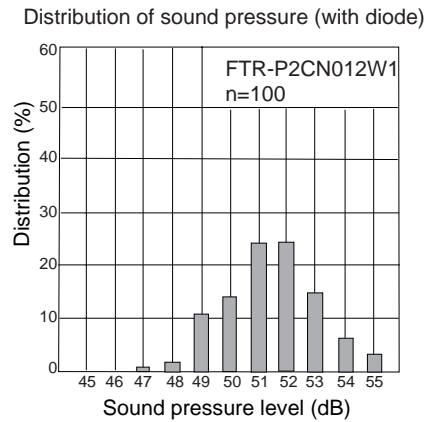
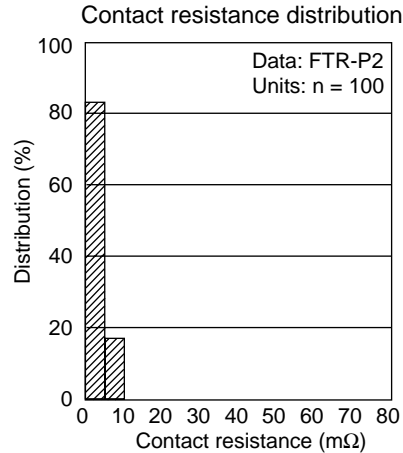
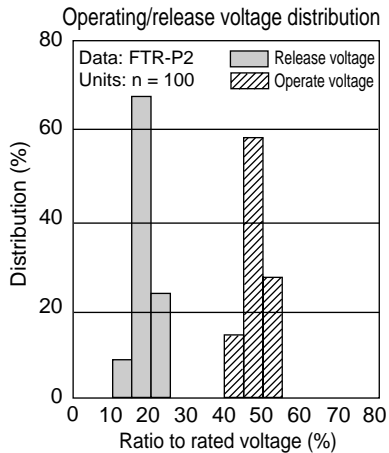


Impact apply time : 11 ± 1 ms, half-sine wave
 Test condition: coil, energized and de-energized
 Impact direction: see drawing below
 Detection level : generation of 1ms or longer contact chattering

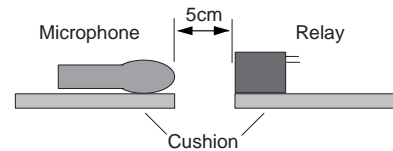


FTR-P2 SERIES

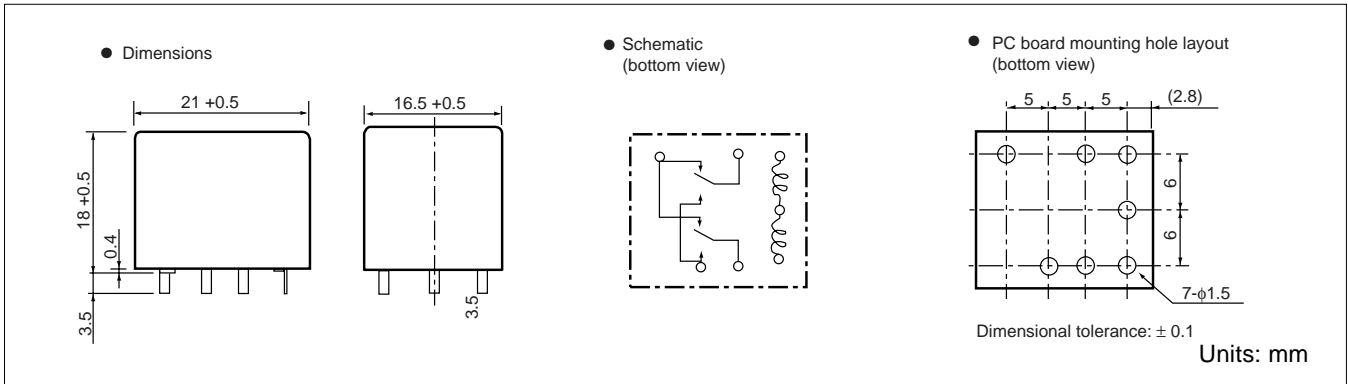
■ REFERENCE DATA



Method of acoustic noise measure
Measuring condition: Distance from 5 cm,
relay operation at 10Hz
Tester: Noise tester Ryon NA-61, A range



■ DIMENSIONS



Архангельск (8182)63-90-72	Ижевск (3412)26-03-58	Магнитогорск (3519)55-03-13	Пермь (342)205-81-47	Сургут (3462)77-98-35
Астана (7172)727-132	Иркутск (395)279-98-46	Москва (495)268-04-70	Ростов-на-Дону (863)308-18-15	Тверь (4822)63-31-35
Астрахань (8512)99-46-04	Казань (843)206-01-48	Мурманск (8152)59-64-93	Рязань (4912)46-61-64	Томск (3822)98-41-53
Барнаул (3852)73-04-60	Калининград (4012)72-03-81	Набережные Челны (8552)20-53-41	Самара (846)206-03-16	Тула (4872)74-02-29
Белгород (4722)40-23-64	Калуга (4842)92-23-67	Нижний Новгород (831)429-08-12	Санкт-Петербург (812)309-46-40	Тюмень (3452)66-21-18
Брянск (4832)59-03-52	Кемерово (3842)65-04-62	Новокузнецк (3843)20-46-81	Саратов (845)249-38-78	Ульяновск (8422)24-23-59
Владивосток (423)249-28-31	Киров (8332)68-02-04	Новосибирск (383)227-86-73	Севастополь (8692)22-31-93	Уфа (347)229-48-12
Волгоград (844)278-03-48	Краснодар (861)203-40-90	Омск (3812)21-46-40	Симферополь (3652)67-13-56	Хабаровск (4212)92-98-04
Вологда (8172)26-41-59	Красноярск (391)204-63-61	Орел (4862)44-53-42	Смоленск (4812)29-41-54	Челябинск (351)202-03-61
Воронеж (473)204-51-73	Курск (4712)77-13-04	Оренбург (3532)37-68-04	Сочи (862)225-72-31	Череповец (8202)49-02-64
Екатеринбург (343)384-55-89	Липецк (4742)52-20-81	Пенза (8412)22-31-16	Ставрополь (8652)20-65-13	Ярославль (4852)69-52-93
Иваново (4932)77-34-06	Киргизия (996)312-96-26-47	Казахстан (772)734-952-31	Таджикистан (992)427-82-92-69	